



**LOOKING FOR BETTER  
PARTS AVAILABILITY  
& RELIABILITY?**

**COMPANY WRENCH IS  
YOUR PARTS  
DESTINATION!**

## OUR LOCATIONS

CARROLL, OH

CLEVELAND, OH

INDIANAPOLIS, IN

RALEIGH, NC

JACKSONVILLE, FL

CINCINNATI, OH

FRANKFORT, KY

CHARLOTTE, NC

WEST PALM BEACH, FL

WILLIAMSTOWN, NJ

KNOXVILLE, TN

COLUMBIA, SC

LAKELAND, FL



# AFTERMARKET AND OEM PARTS

## Aftermarket Undercarriage Replacement Parts

Access our large inventory of undercarriage parts for excavators, dozers, track loaders, material handlers, crushing & screening equipment, and more.

- Track Pads
- Idler Assemblies
- Top Rollers
- Bottom Rollers
- Track Chains
- Master Links
- Drive Sprockets
- Track Adjusters
- Street Pads
- Recoil Assemblies
- Clip-on Rubber Pads



## Compact Equipment Wheel and Undercarriage Replacement Parts

We provide an extensive inventory of premium grade rubber tracks & tires for all makes of track loaders, mini-excavators, & skid steers. Our tracks are made with all-natural abrasion and gouge-resistant rubber, continually wrapped steel cords, and heavy duty steel links in a variety of tread patterns.

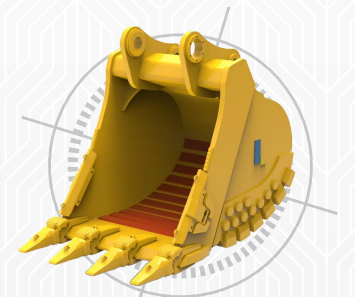
- Rubber Tracks
- Solid Tires
- Clip-on Rubber Pads
- Road Liner Pads
- Top & Bottom Idlers
- Top & Bottom Rollers
- Sprockets



## Ground Engaging Tools

We offer a wide variety of ground engaging tools and parts to fit almost any bucket, scraper, or loader on the market at affordable prices.

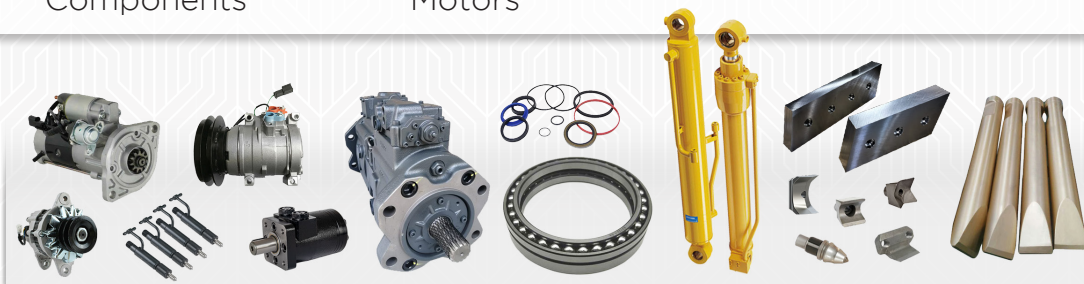
- Bucket Teeth
- Cutting Edges
- Chocky Bars
- Broom Bristle Brushes
- Side Cutters
- Tooth Bars
- Rubber Scrapers
- Wear Buttons
- Compactor Feet
- Road Milling Bits



## New Parts, Used Parts, Rebuilt Parts

Our Parts Department specializes in locating quality, exact-fit aftermarket replacement parts for most makes and models of heavy equipment at competitive prices.

- Starters
- Alternators
- A/C Compressors
- Fuel System Components
- Bearings
- Seal Kits
- Hydraulic Cylinders
- Hydraulic Pumps & Motors
- Final Drives
- Track Frame Components



## Fleetguard Filters

We provide aftermarket filtration solutions for all makes and models with Fleetguard Filters. We can provide a direct replacement filter for most types of equipment, both on and off road. We also offer a full line of Fleetguard fuel and coolant system treatment products to prolong the life and performance of your equipment.

- Oil Filters
- Fuel Filters
- Air Filters
- Cabin Filters
- Hydraulic Filters
- DEF Fluid Filters
- Crank Case Vent Filters
- Fuel System Treatments
- Coolant System Treatments



## Aftermarket Mirrors

Aftermarket mirrors for most brands of excavators, wheel loaders, skid steers, track loaders, articulated trucks, and bulldozers.

- John Deere
- Caterpillar
- Komatsu
- Kobelco
- JCB
- Bobcat
- Case
- Genie
- JLG
- Kobota
- Volvo
- Hitachi
- Sany
- Prinoth
- Takeuchi



## Replacement Cab Glass

We carry replacement glass for all major equipment brands of excavator, wheel loader, skid loader, track loader, articulated trucks, and bulldozers.

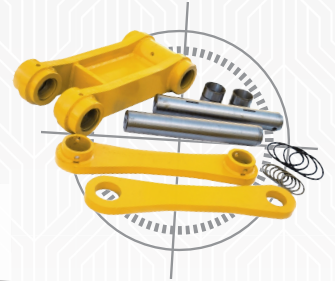
- John Deere
- Caterpillar
- Komatsu
- Kobelco
- JCB
- Bobcat
- Case
- Genie
- JLG
- Kobota
- Volvo
- Hitachi
- Sany
- Prinoth
- Takeuchi
- And More!



## Excavator Linkage Parts

We offer linkage replacement parts for most major brands.

- H-Links
- Bushings
- Seals
- Bucket Pins
- Side Links



## MOBILE SHEAR ATTACHMENT PARTS

### Shear/Blade Kits

Our readily available inventory and industry-leading pricing have established us as the go-to source/first choice for LaBounty blade kits.



Full Blade Kits include:

- Cutting Blades
- Piercing Tips
- Guide Blades
- Cross Blades
- Shims
- Fasteners



### Hammer Parts

We stock a wide variety of aftermarket and OEM hammer parts for any brand of hydraulic breaker. From small skid steer mounted hammers, to large excavator mounted breakers, we have a few to choose from. Our OEM selection includes a brand parts such as LaBounty, Stanley, Paladin, Indeco, Allied, Kent, Furukawa, and more!

- Hammer Bits
- Tool Bushings
- Diaphragms
- Seal Kits





# MULCHING AND CHIPPING PARTS

## Mulching Equipment Parts

- Mulching Teeth
- Cutting Knives
- Rotor Systems
- Lubricants
- Filter Kits
- Cab Guards



## Chipper & Stump Grinder Parts

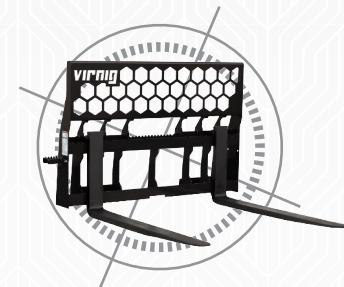
- Knives & Hardware
- Anvils & Hardware
- Filters
- Clutch replacement parts
- Replacement Belts
- Lubricants & Coolants



# FORK LIFTING PARTS

## Fork Carriage Parts

- Fork Carriage Parts
- Replacement Fork Tines

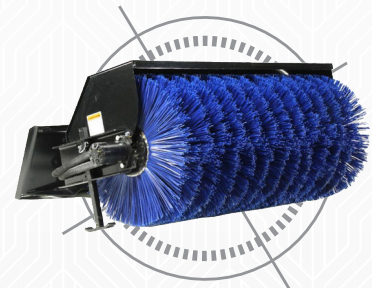


# SWEEPING EQUIPMENT PARTS

## Sweeper Brush Replacements

We supply replacement brooms and brushes for sweeping debris and light snow removal applications.

- Angle Brooms
- Tube Brooms
- Gutter Brooms



# LUBRICANTS

## HYDRAULIC OIL, GEAR OIL, ENGINE OIL, GREASE

We offer top brands of lubricants, specially formulated to meet the needs of high-pressure hydraulic and mechanical systems, ensuring optimal performance and durability. Bio-degradable hydraulic fluid also available.

- JCB
- Mobil
- Shell
- Kobelco
- Marathon
- Schaeffer





## COMPANY WRENCH PARTS

Company Wrench is an excellent choice for heavy equipment parts sourcing because we offer a variety of unique benefits, including same-day shipping, multiple payment options, and a dedicated Parts Sales Representative (PSR). With a reputation for quality and reliability, Company Wrench's parts department stocks a wide range of parts, oils, and lubricants for heavy equipment in various industries, including construction, demolition, forestry, and scrap recycling.

## YOUR DEDICATED PARTS SALES REPRESENTATIVE (PSR)

Your dedicated PSR will work with you to understand your specific needs, provide parts look-up services, source hard-to-find parts, and offer the best prices for both OEM and aftermarket heavy equipment parts. Having a dedicated representative means that you can save time and money on parts sourcing, as they will be able to quickly and efficiently find the parts you need, without the hassle of searching through multiple suppliers.

Company Wrench's expertise, combined with a commitment to the Cutting Edge of Customer Service, makes us the go-to source for reliable and cost-effective parts. With our comprehensive inventory, vast parts network, and knowledgeable staff, Company Wrench is your one-stop-shop for all your heavy equipment parts needs.

## CONTACT YOUR DEDICATED PSR

### LARGE INVENTORY OF OEM & AFTERMARKET PARTS IN STOCK

OEM brands we carry across our branches

**SANY**

**KOBELCO**

**JCB**



**FUCHS**  
A TEREX BRAND

**FECON**

**Pinotti**

**Bandit**

**LABOUNTY**

**STANLEY**

Aftermarket parts compatible with most major brands of equipment

**Caterpillar   Komatsu   John Deere   Volvo   Bobcat   Hitachi   Doosan   Case   Genie   Takeuchi   Kubota**